

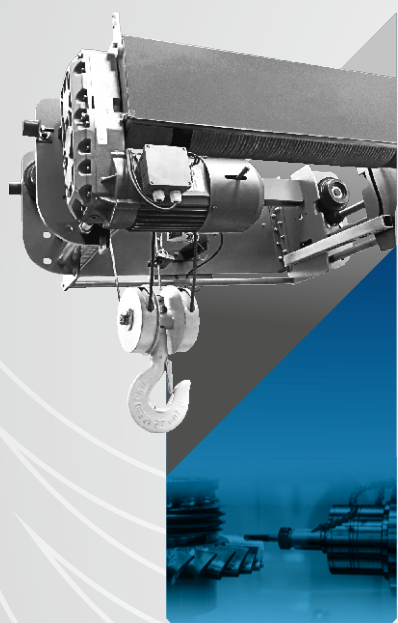
Organized by



KOLKATA MACHINE TOOLS SHOW

08 | 09 | 10 | 11 MAY 2026

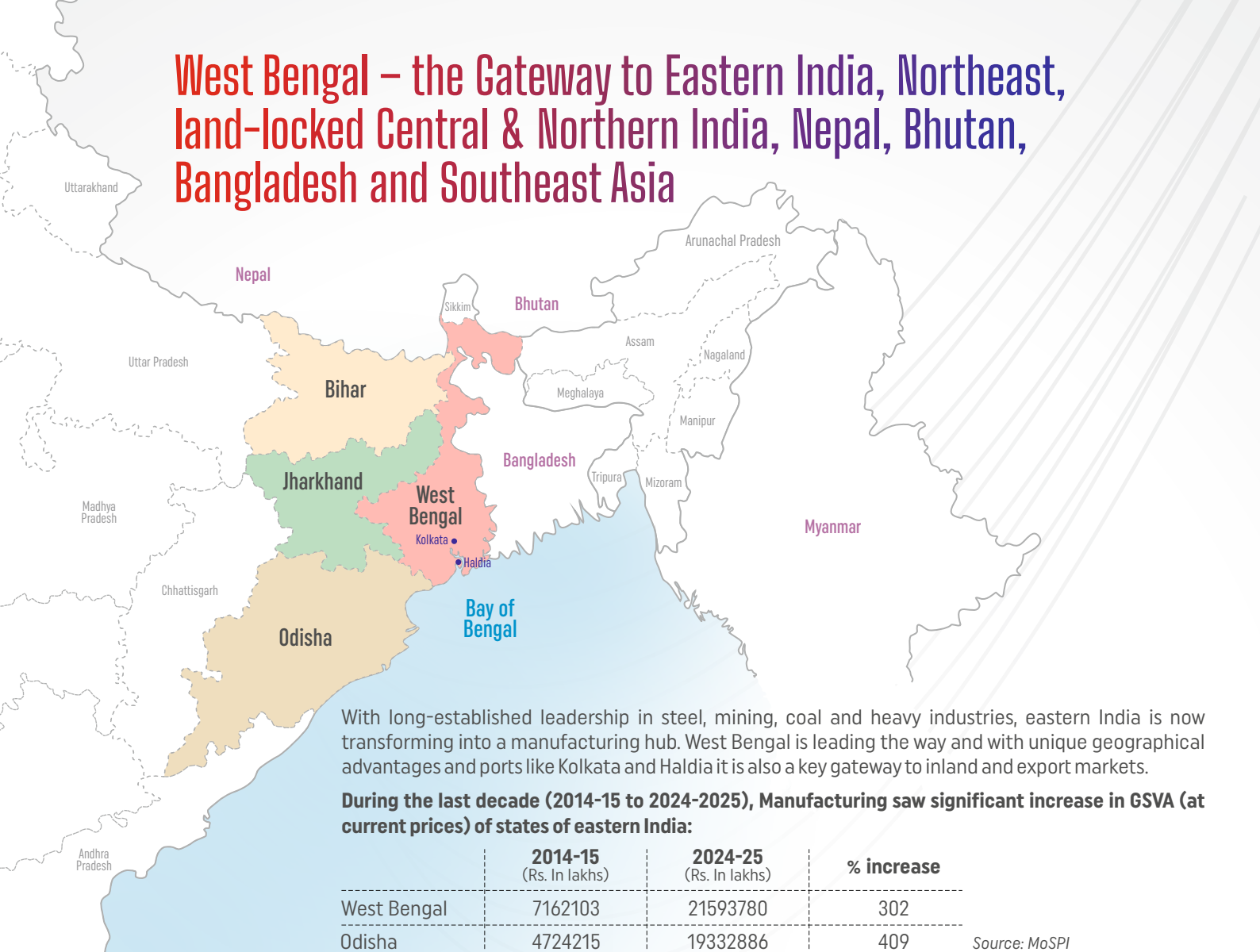
BISWA BANGLA MELA PRANGAN
KOLKATA, WEST BENGAL, INDIA



EASTERN INDIA - STRONG AS STEEL

Next Manufacturing Power Hub

West Bengal – the Gateway to Eastern India, Northeast, land-locked Central & Northern India, Nepal, Bhutan, Bangladesh and Southeast Asia



Jharkhand, Chhattisgarh and Bihar also nearly doubled their Manufacturing output.

West Bengal contributes one-fifth of the country's net value added in engineering, worth about \$71 billion and exports engineering goods valued at \$1.8 billion annually (*Source: wbindustries.gov.in*).

Odisha is not only the steel capital of India it is also its top aluminum producer with large downstream manufacturing industries. Power, Petrochemicals & Chemicals, Food Processing, Biotechnology & Pharmaceuticals, Textiles & Apparel are other surging industries.

Jharkhand while leading in steel, mining, power and cement industries due to its rich mineral deposits, is also fast emerging as a new citadel for the automobile and auto components industry. It supports many ancillary and tool manufacturing industries.

Chhattisgarh with rich mineral deposits hosts India's largest steel plant in Bhilai and key sectors include power generation, cement, aluminium, and textiles.

Amid this momentum, the Kolkata Machine Tools Show 2026 will showcase cutting-edge technologies in machine tools and a host of engineering products essential to the manufacturing process.

Major engineering products exported from West Bengal

- Iron and Steel along with its Products
- Industrial Machinery
- Non-Ferrous Metals and Products
- Air conditioning and Refrigeration Machinery and Parts
- Electric Machinery and Equipment
- Accumulator and Battery
- Auto Components/Parts
- Aircrafts, Spacecraft and Parts
- Railway Transport and Parts
- Cranes, Lifts & Winches
- Construction Machinery
- Hand Tools, Cutting Tools and Implements made of metals
- Machinery for ATMs, Injection Moulding Machinery, Valves
- Nuclear Reactors, Industrial Boilers and Parts
- Medical and Scientific Instruments

Source: wb.gov.in

CREATING A MARKETPLACE FOR



MACHINE TOOLS



LASER TECH



AUTOMATION



METROLOGY



WELDING



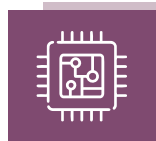
PRECISION TOOLS



HYDRAULICS



MATERIAL HANDLING



ELECTRONICS



FOUNDRIES



ITES



INDUSTRIAL SAFETY

SECTOR PROFILE

- Machine Tools Cutting & Forming
- Precision Tools, Power & Hand Tools
- Robotics & Automation
- Electronics & Electricals
- Machine Tools Accessories
- Brass Parts
- Industrial Lubricants
- Pumps & Valves
- Material Handling Equipment
- Forging Machinery
- Foundry Equipment and Supplies
- ITES (Software, CAD-CAM)
- Hydraulics & Pneumatics
- Air compressor
- Testing & Measuring Instruments
- Welding Equipment & Consumables
- Gears, Motors & Drives
- Surface Finishing & Blasting
- Tube & Pipe Technology
- Industrial Safety
- Industrial Supplies
- Newly launched products & technology

VISITOR PROFILE

- Agriculture, Food Processing & Dairy
- Automobiles & Auto Components
- Capital Goods, White & Brown Goods
- Casting & Forging
- Earthmoving Equipment
- Electrical & Electronics
- Infrastructure Sector
- Job Shops
- Material Handling Equipment
- Medical Engineering & Pharma Equipment
- Oil & Gas Equipment
- Plastic Processing
- Process Plant & Machinery
- Railway, Defence & Aerospace
- Steel
- Technical Institutions & R&D Organizations
- Telecom Equipment
- Textile Machinery
- Windmill, Power and Thermal

Free bus service to the venue for registered visitors from Jamshedpur and Dhanbad.



PARTICIPATION CHARGES

Type of Participation	Domestic Rate (INR per sq. m.)	International Rate (USD per sq. m.)
Standard Booth	₹ 11,000	\$ 225
(Before 30 Sept '25)	₹ 10,000	-
Bare Space	₹ 10,000	\$ 175
(Before 30 Sept '25)	₹ 9,000	-

PREMIUM POSITION CHARGES:

2 sides open 5% extra | 3 sides open 7.5% extra
4 sides open 10% extra

EXTRA FACILITIES

ELECTRICITY	Domestic Rate (INR per hp)	International Rate (USD per hp)
Before exhibition (single phase)	₹ 3,000	\$ 70
During exhibition	₹ 3,000	\$ 70

COMPRESSOR	Domestic Rate (INR per connection)	International Rate (USD per connection)
3 CFM / 100 psi	₹ 14,500	\$ 300
6 CFM / 100 psi	₹ 19,500	\$ 400
3 CFM / 100 psi	₹ 24,500	\$ 500

Taxes extra as applicable on all rates mentioned

SHELL SCHEME FACILITIES (per 9 sq.m.) :

Prefabricated stall with exhibitor's name on fascia, one table, two chairs, three spotlights, one 5A plug point, three exhibitor badges, one dustbin and carpet. Electricity for stall lighting during exhibition is included. Additional power for operation of exhibits is charged extra.

Participants opting for BARE SPACE will not avail of the Shell Scheme Facilities mentioned above except exhibitor badges commensurate to their area booked. They will be wholly responsible for the design (organizer's approval required), construction and furnishing of their stall. Electricity during setup and exhibition will be charged extra.



YOUR PARTNER IN GROWTH SINCE 1995

K and D Communication Limited (KDCL) is India's largest investment summit and trade fair organizer. Over 3 decades, KDCL has consistently contributed to India's growth story by organizing and managing 100+ international B2B industrial exhibitions in India and abroad in diverse industries like Engineering and Capital Goods, Infrastructure, Manufacturing, Plastics, Telecommunications and Textiles.

Its portfolio of acclaimed B2B trade show brands includes **ENGIMACH**, **INDIA MACHINE TOOLS SHOW**, **RAJKOT MACHINE TOOLS SHOW**, **PUNE MACHINE TOOLS SHOW** and **ITMACH INDIA**.

KDCL is a renowned provider of bespoke turnkey event management often including venue and space selling. It has managed many large-scale investment summits, trade shows and conferences organized by trade associations, the **GOVERNMENT OF INDIA** and **STATE GOVERNMENTS of GUJARAT, UTTAR PRADESH, UTTARAKHAND and CHHATTISGARH**. KDCL has jointly organized trade shows with various trade associations and reputed exhibition organizers.

KDCL is the first Indian exhibition organizer to develop an exhibition venue in **PPP model** with the government of Gujarat. The **HELIPAD EXHIBITION CENTRE** in Gandhinagar, Gujarat is one of the largest exhibition centres in India and the largest in Gujarat. Equipped with world-class infrastructure, HEC is the venue of choice for many international trade shows and events.

KDCL is dedicated to the expert leverage of trade show platforms to contribute to national economic growth.

FLAGSHIP BRANDS

ENGIMACH

**India
machine
Tools Show**

**RAJKOT
MACHINE
TOOLS SHOW**

**Pune
Machine
tools show**

**JAMNAGAR
INDUSTRIAL
INTERNATIONAL
EXPO**

**CASTINGS &
FOUNDRIES
EXPO INDIA**
Promoting Foundries

**GUJARAT
CONEX**

**ITMACH
INDIA**

For stall booking contact: Nilesh Prajapati - 81606 60867 | nilesh@kdclglobal.com

K AND D COMMUNICATION LTD.

Head Office: 206, 2nd Floor, Harmony Icon,
Near Baghban Party Plot, Thaltej Hebatpur Road,
Thaltej, Ahmedabad - 380059, Gujarat, India.

Kolkata Branch Office: 48B, Muktaram Babu Street,
Shree Siddhivinayak Devasthanam Premises,
Kolkata - 700007, West Bengal, India

+91 99090 41613 / 18 | info@kdclglobal.com | www.kdclglobal.com | [f](#) [@](#) [in](#)