

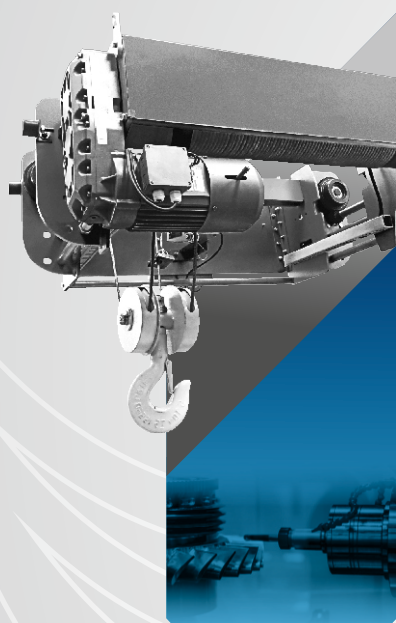
Organized by



KOLKATA MACHINE TOOLS SHOW

08 | 09 | 10 | 11 MAY 2026

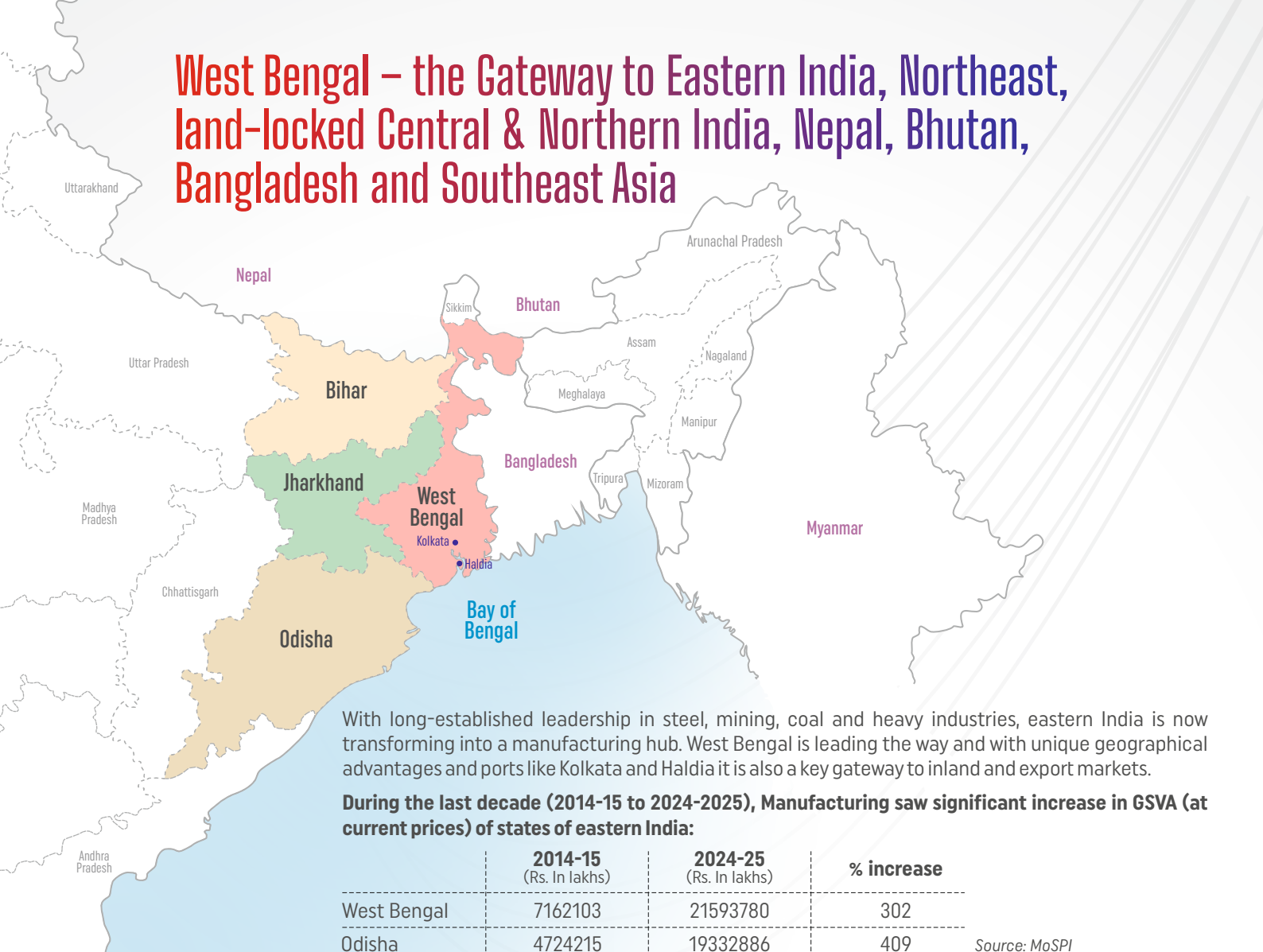
BISWA BANGLA MELA PRANGAN
KOLKATA, WEST BENGAL, INDIA



EASTERN INDIA - STRONG AS STEEL

Next Manufacturing Power Hub

West Bengal – the Gateway to Eastern India, Northeast, land-locked Central & Northern India, Nepal, Bhutan, Bangladesh and Southeast Asia



Jharkhand, Chhattisgarh and Bihar also nearly doubled their Manufacturing output.

West Bengal contributes one-fifth of the country's net value added in engineering, worth about \$71 billion and exports engineering goods valued at \$1.8 billion annually (*Source: wbindustries.gov.in*).

Odisha is not only the steel capital of India it is also its top aluminum producer with large downstream manufacturing industries. Power, Petrochemicals & Chemicals, Food Processing, Biotechnology & Pharmaceuticals, Textiles & Apparel are other surging industries.

Jharkhand while leading in steel, mining, power and cement industries due to its rich mineral deposits, is also fast emerging as a new citadel for the automobile and auto components industry. It supports many ancillary and tool manufacturing industries.

Chhattisgarh with rich mineral deposits hosts India's largest steel plant in Bhilai and key sectors include power generation, cement, aluminium, and textiles.

Amid this momentum, the Kolkata Machine Tools Show 2026 will showcase cutting-edge technologies in machine tools and a host of engineering products essential to the manufacturing process.

Major engineering products exported from West Bengal

- Iron and Steel along with its Products
- Industrial Machinery
- Non-Ferrous Metals and Products
- Air conditioning and Refrigeration Machinery and Parts
- Electric Machinery and Equipment
- Accumulator and Battery
- Auto Components/Parts
- Aircrafts, Spacecraft and Parts
- Railway Transport and Parts
- Cranes, Lifts & Winches
- Construction Machinery
- Hand Tools, Cutting Tools and Implements made of metals
- Machinery for ATMs, Injection Moulding Machinery, Valves
- Nuclear Reactors, Industrial Boilers and Parts
- Medical and Scientific Instruments

Source: wb.gov.in

CREATING A MARKETPLACE FOR



MACHINE TOOLS



LASER TECH



AUTOMATION



METROLOGY



WELDING



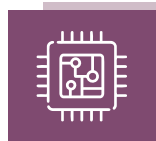
PRECISION TOOLS



HYDRAULICS



MATERIAL HANDLING



ELECTRONICS



FOUNDRIES



ITES



INDUSTRIAL SAFETY

SECTOR PROFILE

- Machine Tools Cutting & Forming
- Precision Tools, Power & Hand Tools
- Robotics & Automation
- Electronics & Electricals
- Machine Tools Accessories
- Brass Parts
- Industrial Lubricants
- Pumps & Valves
- Material Handling Equipment
- Forging Machinery
- Foundry Equipment and Supplies
- ITES (Software, CAD-CAM)
- Hydraulics & Pneumatics
- Air compressor
- Testing & Measuring Instruments
- Welding Equipment & Consumables
- Gears, Motors & Drives
- Surface Finishing & Blasting
- Tube & Pipe Technology
- Industrial Safety
- Industrial Supplies
- Newly launched products & technology

VISITOR PROFILE

- Agriculture, Food Processing & Dairy
- Automobiles & Auto Components
- Capital Goods, White & Brown Goods
- Casting & Forging
- Earthmoving Equipment
- Electrical & Electronics
- Infrastructure Sector
- Job Shops
- Material Handling Equipment
- Medical Engineering & Pharma Equipment
- Oil & Gas Equipment
- Plastic Processing
- Process Plant & Machinery
- Railway, Defence & Aerospace
- Steel
- Technical Institutions & R&D Organizations
- Telecom Equipment
- Textile Machinery
- Windmill, Power and Thermal

Free bus service to the venue for registered visitors from Jamshedpur and Dhanbad.



PARTICIPATION CHARGES

	Standard Booth (per sq. m.)	Bare Space (per sq. m.)
Manufacturers	₹ 11,000/-	₹ 10,000/-
Early Bird Rates before 30th Sep '25	₹ 10,000/-	₹ 9,000/-

PREMIUM POSITION CHARGES:

2 sides open 5% extra | 3 sides open 7.5% extra
4 sides open 10% extra

ELECTRICITY (EXTRA FACILITIES)	COST
Before exhibition (single phase)	INR 3,000 per HP
During exhibition	INR 3,000 per HP

COMPRESSOR (EXTRA FACILITIES)	COST
3 CFM/100 psi	INR 14,500 per connection
6 CFM/100 psi	INR 19,500 per connection
10 CFM/100 psi	INR 24,500 per connection

Taxes extra as applicable on all rates mentioned

SHELL SCHEME FACILITIES (per 9 sq.m.) :

Prefabricated stall with exhibitor's name on fascia, one table, two chairs, three spotlights, one 5A plug point, three exhibitor badges, one dustbin and carpet. Electricity for stall lighting during exhibition is included. Additional power for operation of exhibits is charged extra.

Participants opting for BARE SPACE will not avail of the Shell Scheme Facilities mentioned above except exhibitor badges commensurate to their area booked. They will be wholly responsible for the design (organizer's approval required), construction and furnishing of their stall. Electricity during setup and exhibition will be charged extra.



YOUR PARTNER IN GROWTH SINCE 1995

K and D Communication Limited (KDCL) is India's largest investment summit and trade fair organizer. Over three decades, KDCL has consistently contributed to India's growth story by organizing and managing 100+ international B2B industrial exhibitions in India and abroad across various industries, including Engineering and Capital Goods, Infrastructure, Manufacturing, Plastics, Telecommunications, and Textiles.

Its portfolio of acclaimed B2B trade show brands includes **ENGIMACH**, **INDIA MACHINE TOOLS SHOW**, **RAJKOT MACHINE TOOLS SHOW**, **PUNE MACHINE TOOLS SHOW**, and **ITMACH INDIA**. KDCL is also a renowned provider of bespoke turnkey event management solutions, often including venue and space selling.

It has successfully managed large-scale investment summits, trade shows, and conferences organized by trade associations, the **Government of India**, and **State Governments of Gujarat, Uttar Pradesh, Uttarakhand, and Chhattisgarh**. KDCL has also partnered with various trade associations and reputed exhibition organizers to co-host trade shows.

KDCL is the first Indian exhibition organizer to develop an exhibition venue under the **PPP model** with the Government of Gujarat. The **Helipad Exhibition Centre (HEC)** in Gandhinagar, Gujarat, is one of the largest exhibition centers in India and the biggest in Gujarat. Equipped with world-class infrastructure, HEC has become the preferred venue for many international trade shows and events.

KDCL remains committed to leveraging trade show platforms to drive national economic growth.

FLAGSHIP BRANDS

ENGIMACH

**India
machine
Tools Show**

**RAJKOT
MACHINE
TOOLS SHOW**

**Pune
Machine
tools show**

**JAMNAGAR™
INDUSTRIAL
INTERNATIONAL
EXPO**

**CASTINGS &
FOUNDRIES
EXPO INDIA**
Promoting Foundries

**GUJARAT
CONEX**

**ITMACH
INDIA**

For stall booking contact: Keyur Gosai - 78748 57227 | keyur@kdclglobal.com

K AND D COMMUNICATION LTD.

Head Office: 206, 2nd Floor, Harmony Icon,
Near Baghban Party Plot, Thaltej Hebatpur Road,
Thaltej, Ahmedabad - 380059, Gujarat, India.

Kolkata Branch Office: 48B, Muktaram Babu Street,
Shree Siddhivinayak Devasthanam Premises,
Kolkata - 700007, West Bengal, India

+91 99090 41613 / 18 | info@kdclglobal.com | www.kdclglobal.com | [f](#) [@](#) [in](#)